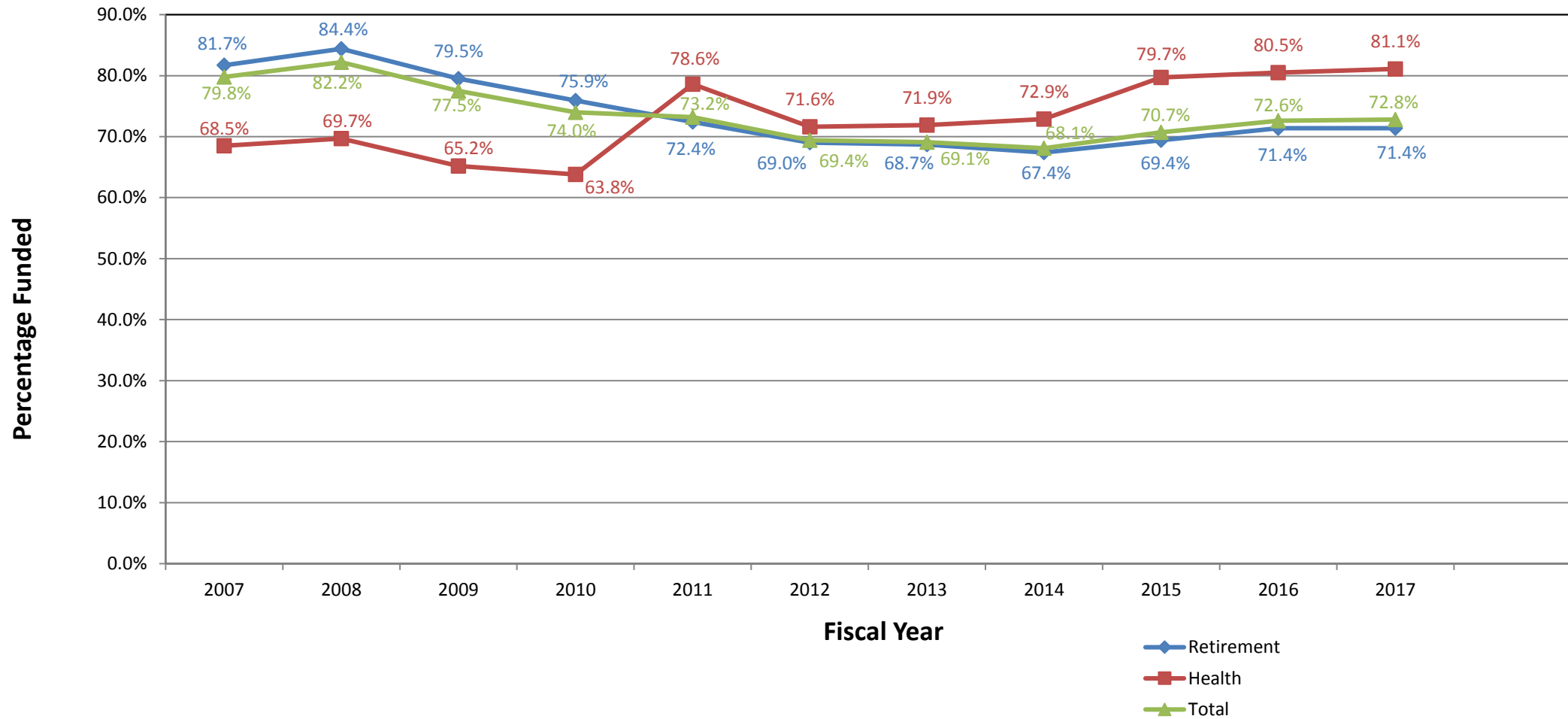


### Funded Ratio from 2007 to 2017



	2007	2008	2009	2010	2011	2012	2013	2014	2015	2016	2017
Retirement	81.7	84.4	79.5	75.9	72.4	69.0	68.7	67.4	69.4	71.4	71.4
Health	68.5	69.7	65.2	63.8	78.6	71.6	71.9	72.9	79.7	80.5	81.1
Total	79.8	82.2	77.5	74.0	73.2	69.4	69.1	68.1	70.7	72.6	72.8